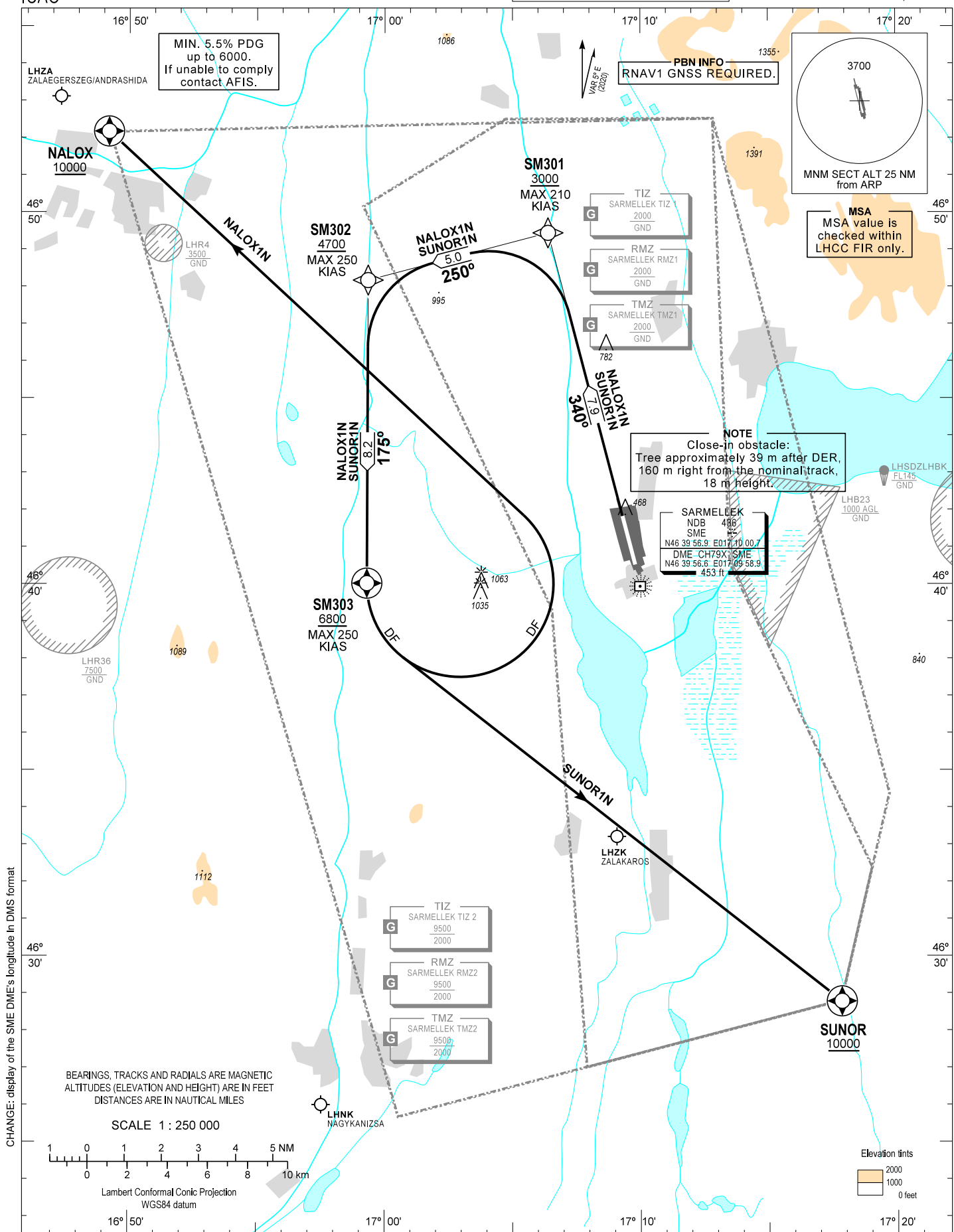


TRANSITION ALTITUDE
10000

BALATON INFO	134.585
BUDAPEST INFORMATION (WEST)	125.500

HÉVÍZ/BALATON
RNAV RWY 34
NALOX1N, SUNOR1N



AD 2 LHSM STANDARD DEPARTURE CHART INSTRUMENT RWY 34

CLIMBING:
In order to reach exit altitude min. PDG 5.5% up to 6000. After departure climb initially 10000. Further climb only by ATC.

ALTIMETER SETTING:
When passing 9000 change QNH setting for Budapest QNH provided by BALATON INFO or BUDAPEST INFORMATION.

SID NAME	PROCEDURE	RESTRICTIONS
NALOX1N (NALOX ONE NOVEMBER DEPARTURE)	Climb to SM301 on course 340°, at or above 3000. To SM302 at or above 4700. To SM303 at or above 6800. Turn left direct to <u>NALOX</u> at or above 10000.	MAX 210 KIAS at SM301. MAX 250 KIAS at SM302, SM303.
SUNOR1N (SUNOR ONE NOVEMBER DEPARTURE)	Climb to SM301 on course 340°, at or above 3000. To SM302 at or above 4700. To SM303 at or above 6800. Direct to <u>SUNOR</u> at or above 10000.	

Recommended navaid: SME NDB.

WAYPOINT COORDINATES

WP ID	Latitude	Longitude
SM301	N46 49 27.0	E017 06 23.4
SM302	N46 48 10.7	E016 59 21.0
SM303	N46 40 01.7	E016 59 18.4
NALOX	N46 52 10.5	E016 49 12.3
SUNOR	N46 28 47.0	E017 17 50.0